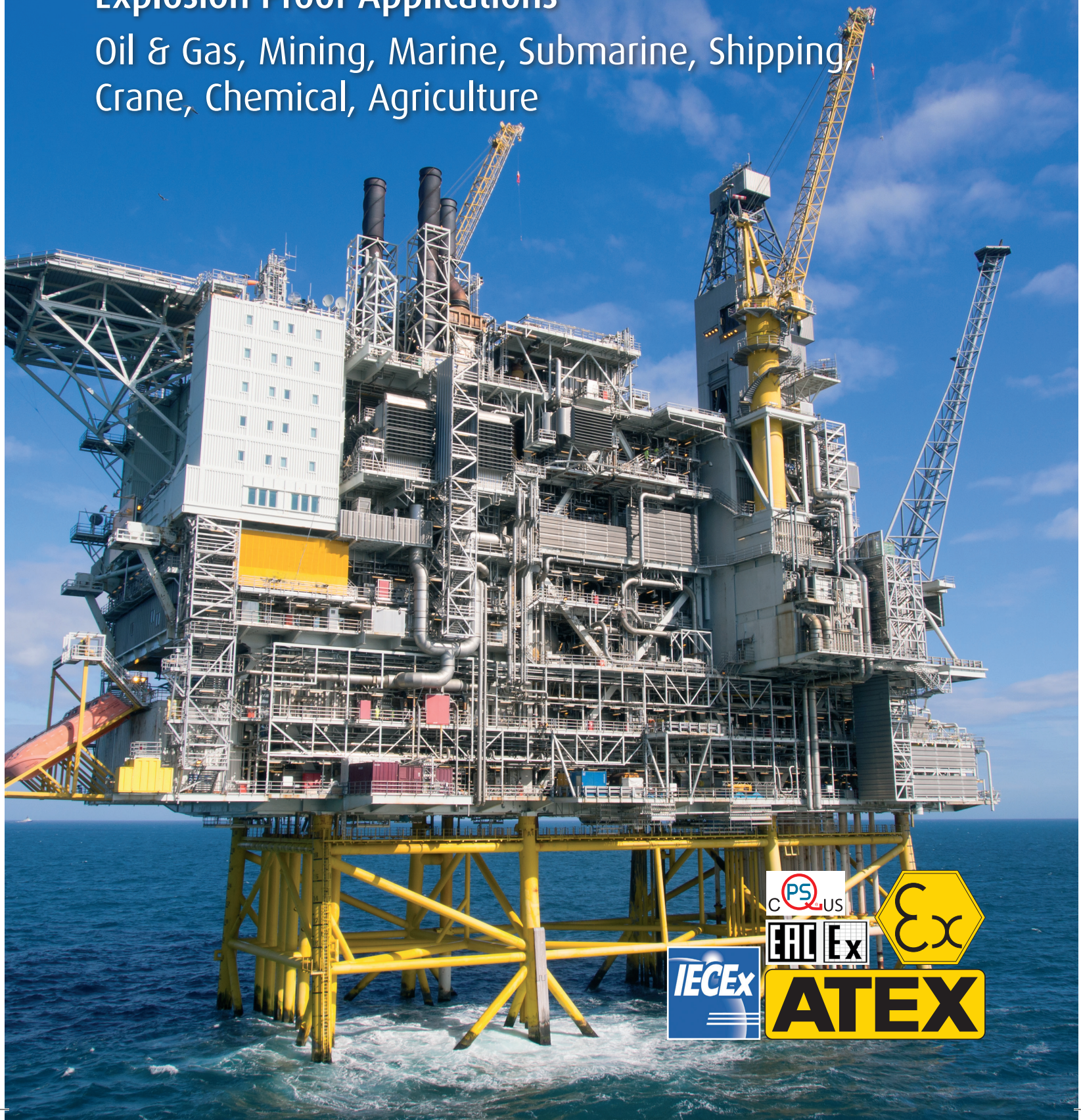


Ex-Proof Encoders

Explosion Proof Applications

Oil & Gas, Mining, Marine, Submarine, Shipping,
Crane, Chemical, Agriculture



We have the expertise

The history of Scancon

SCANCON has been manufacturing encoders since 1973, and is well known for its high quality encoders and special solutions. SCANCON exports encoders to more than 78 countries worldwide from our factory and head office near Copenhagen.

Introduction:

Scancon Encoders offers the largest range of ATEX encoders in the world. These encoders are in use worldwide in a variety of applications. Encoder sizes range from \varnothing 24 mm up to \varnothing 108 mm. Our encoder housings, cable glands, and covers are selected from non-corrosive material which allows us to offer environmental ratings as high as IP 69K.

Robust as well as cost effective, Scancon provides the encoders of choice for major oil and gas companies around the world.

Incremental types:

SCA24EX, SCH24EX, 2QEX, 2REX, 2D, SCH86BEX

Absolute types:

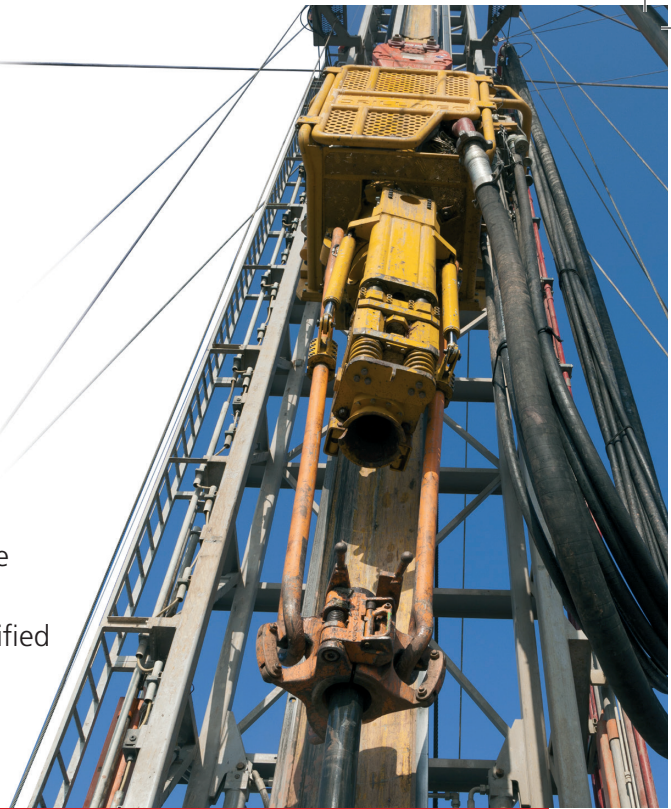
EXAG, EXME, EXMU, SCH108BEX



Industrial encoders

Oil and gas field encoders

Scancon has long been an industry leader in providing encoders to the Oil and Gas industry. With an established expertise in designing harsh environment encoders, Scancon offers a wide variety of Ex-proof certified incremental and absolute encoders and related products.



SCH68DW

Hollow Shaft Encoder

- Standard 1" – 14 dia.
- Threaded connector and convertible adaptor
- Ø 68 mm
- Rugged and Reliable
- The smallest DrawWorks encoder on the market



SCH86BEX

Ex-Proof Hollow Shaft Encoder

- ATEX, IECEx, North America Class I Div. 2, and EAC Ex certified
- Rugged and Reliable
- Removable End Cap for field replacement of cable
- Ø 86 mm
- Unbreakable Disk
- Applications: top drives, motors, winches, cranes, DrawWorks



2QEX-A

Ex-Proof Shaft Encoder

- ATEX Zone 2 Certified
- Rugged and Reliable
- IP 67 "Water-Proof" Protection
- Unbreakable Disk
- Applications: wireline units, cranes, top drives



2REX-A

Ex-Proof Shaft Encoder

- ATEX & IECEx Zone 1 Certified
- Robust construction
- Removable End Cap for field replacement of cable
- Ø 68 mm
- Unbreakable Disk
- Applications: top drives, DrawWorks, cranes, winches, control panels, motors, rotary tables



EXAG

Ex-Proof Absolute Encoder

- ATEX & IECEx Zone 1 Certified
- Ø78 mm
- SSI, Profibus, CANOpen, or DeviceNet protocols
- Dual Output (Incremental + Profibus) option
- Applications: top drives, cranes, winches, anchors

Industrial encoders

Mining encoders

ZREX-A-SR

Ex-Proof Shaft Encoder

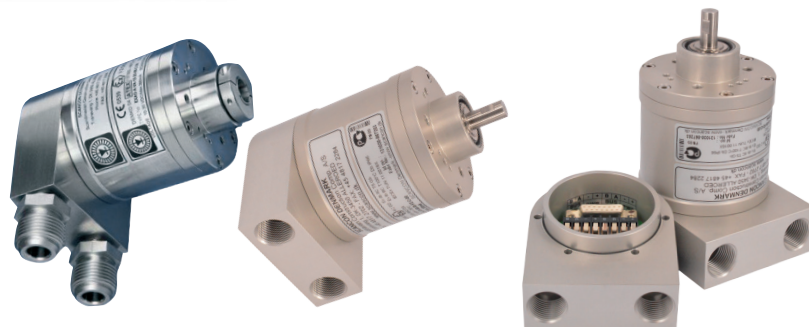
- ATEX & IECEx Zone 1 Certified
- Unbreakable Disk
- Stainless Steel
- Ø 68
- Removable End Cap for field replacement of cable
- IP 66 (IP 67 option)
- Applications: mining, cranes, winches, control panels, motors, anchors, dry docks, DrawWorks



EXME-VA

Ex-Proof Absolute Encoder

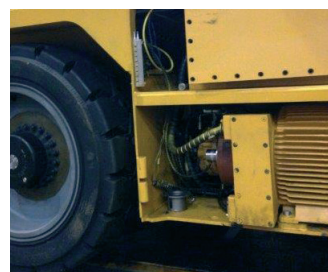
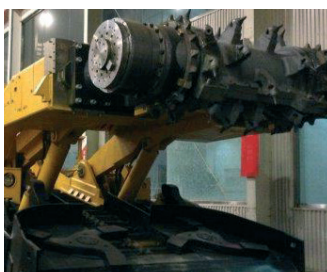
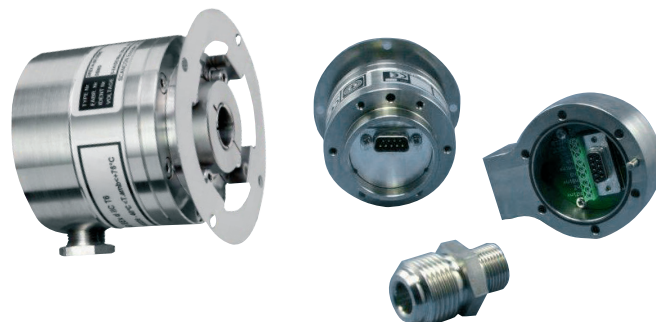
- ATEX & IECEx Zone 1 Certified Mining Certified
- Stainless Steel
- Alu with 22 micron Anodization "Seawater-Proof"
- SSI, Profibus, CANOpen, or DeviceNet protocols
- Ø 78 mm
- Applications: cranes, excavators, saws



REXM

Ex-Proof Hollow Shaft

- ATEX & IECEx Zone 1 Certified Mining Certified
- Stainless Steel
- Alu with 22 micron Anodization "Seawater-Proof"
- SSI, Profibus, CANOpen, or DeviceNet protocol
- Ø 78 mm
- Applications: cranes, excavators, motors, winches, saws



Cable drums on Mining conveyor belt vehicle. EXME absolute encoder.

Mining drill machine and conveyor belt vehicle. REXM absolute encoder.



Heavy Duty encoders

Specialized applications

EXMU

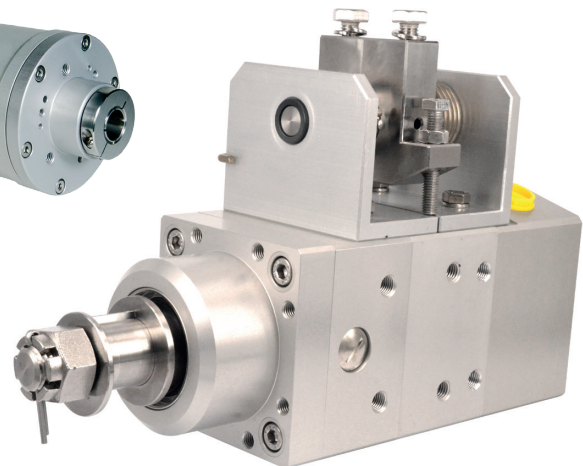
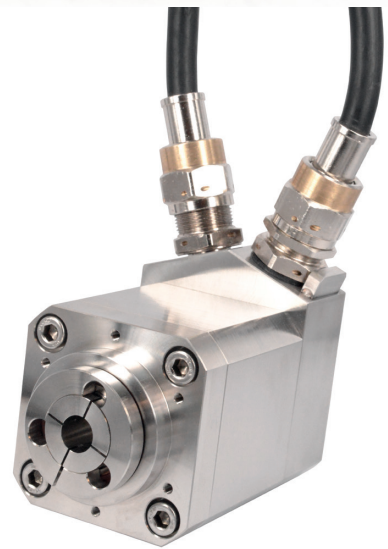
Hollow Shaft or Shaft -option

- MSHA Certified
- \varnothing 80 mm
- AISI Stainless Steel
- Absolute shaft encoder
- SSI, Profibus, CANOpen, or DeviceNet protocol
- Applications: cranes, excavators, saws

EXAG

Hollow Shaft or Shaft -Option

- ATEX & IECEx Zone 1 Certified
- \varnothing 100 mm absolute
- SSI, Profibus, CANOpen, or DeviceNet protocol.
- Dual Output -Option
- Applications: top drives, cranes, winches, anchors



World's smallest Ex-Proof encoders

Rig controls and commercial painting enclosures

SCA24EX and SCH24EX encoders are mainly used on different types of panels in rig control houses and painting cabins. They are also used directly as non-contact potentiometers with the turn-knob mounted directly on the shaft.



Panels on rig control house

Knob mounted directly on SCA24EX



Car painting



SCA24EX

Ex-Proof Shaft Encoder

- The smallest Ex-Proof encoder on the market
- ATEX & IECEx Zone 1 Certified
- Ø 24 mm
- IP 67 "Water-Proof" Protection
- 22 micron Anodization "Seawater-proof"
- Application: control panels, car painting, rig controls



SCH24EX

Ex-Proof Hollow-Shaft Encoder

- The smallest Ex-Proof encoder on the market
- ATEX & IECEx Zone 1 Certified
- Ø 24 mm
- IP 67 "Water-Proof" Protection
- 22 micron Anodization "Seawater-proof"
- Application: control panels, car painting, rig controls

Development of an encoder

ATEX Zone 2

After listening to comments and concerns from numerous customers, Scancon developed an encoder specifically designed to meet the harsh environments associated with DRILLING and WIRELINE operations in the Oil Industry.

The 2QEX encoder is designed for the rugged conditions encountered at the drill site. With a shaft that is mechanically fixed in place and an unbreakable metal or plastic disk, the 2QEX is built to withstand the shock and vibration often encountered during operations around an oil rig.

The 2QEX has an environmental rating of IP 67. The shaft seal is IP 67.

The seal protecting against fluid ingress from the connector is located inside the encoder housing. Even if the connector is damaged, fluid cannot enter the encoder. In addition, the connector itself is rated IP 67. In order to test the durability of the encoder, Scancon conducted a test in which a production model 2QEX encoder was submerged in motor oil (15W-40W) for 8 days.



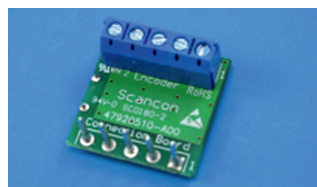
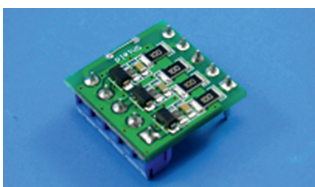
Scancon's 2QEX encoder provides the following:

- Exceptional Reliability
- Increased Profitability (ROI)
- Easy Installation
- Enhanced Performance
- ATEX Certification
- Reduced Maintenance Activity

TSM

Transient Suppression Module

The Transient Suppression Module is intended to be used in environments where severe electrical transient and disturbances are encountered. The module will protect the encoder electronic from malfunctioning due to power over-load or electrical disturbances coming through the cable. Available as a stand-alone option or as a built-in option on several different encoder types (ask your local Sales representative for details).



All SCANCON incremental encoders for wind turbine applications have built-in TSM protection.



Note: TSM is not a lighting protection device. However if there is lightning in nearby area, the TSM will absorb electrical disturbances

Find your local agent or distributor on www.scancon.dk
– or contact one of our offices:

Denmark, Head Office and Production:

SCANCON Encoders A/S
Huginsvej 8
3400 Hillerød, Denmark
www.scancon.dk

E-mail: sales-hq@scancon.dk

Pho: +45 48 17 27 02

Fax: +45 48 17 22 84

China Office:

SCANCON Encoders A/S
Room 1904, floor 19, Building Shen Yin Fa Zhan
Wuding Road # 327, Jing An District,
Shanghai, Zip 200040, P.R. China
www.scancon.cn

Email: sales@scancon.cn

Pho: +86 21 6218 6148

Mobile: +86 18917566289

Fax: +86 21 6218 9992

India Office:

SCANCON Encoders A/S
A-5B / 112B, Janakpuri,
New Delhi - 110058
Mr. Naveen Kr. Sharma

E-mail: india@scancon.dk

Pho: +91-11-43513836

Mobil: +91-9312788624 / +91-9810088624

Fax: +91-11-43513836

Skype ID: scanconindia

South America Office:

SCANCON Encoders A/S
Rua Várzea Paulista. 305. 2º Andar. Sala 07
CEP: 13202-700
Vila Agrícola
Jundiaí – SP, Brazil

E-mail: dgp@scancon.dk

Pho: +55 11 4526-6989

Fax: +55 11 4526-6989

Agent or Distributor:



www.scancon.dk