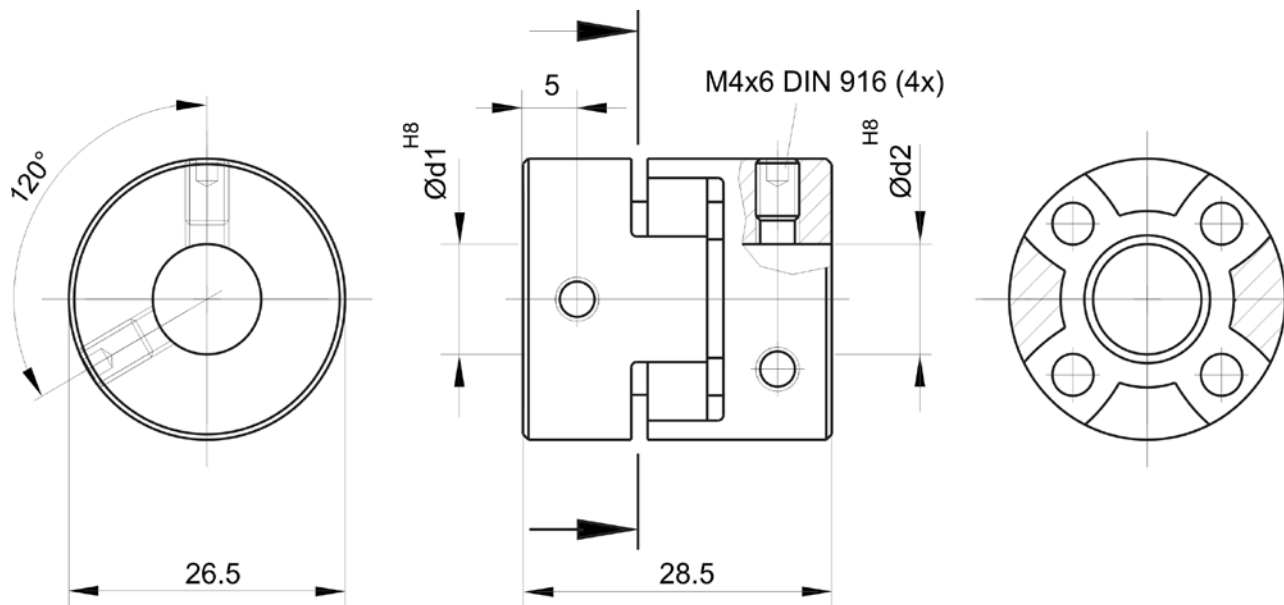


Coupling KKAS 1500/80, KKXS 1500/80

Shore hardness	80 (blue)
Max offset of shaft:	
Radial at $n = 750 \text{ min}^{-1} \text{ rpm}$	$\pm 0,22 \text{ mm}$
Axial	$\pm 1 \text{ mm}$
Angular at $n = 750 \text{ min}^{-1} \text{ rpm}$	$\pm 1,3 \text{ Degree}$
Moment of inertia	30 gcm^2
Max. clamping torque DIN912	150 Ncm
Max. clamping torque DIN916	120 Ncm
Temperatur range	$-30 \rightarrow +80 \text{ }^\circ\text{C}$
Weight appr.	32 g
Materiale: Flange	Aluminium/Stainless steel
Materiale: Damping element	Polyurethane



d1	d2	Type nr.	Toll.	Material	Ordering nr.	
6	6	KKAS 1500 6/6		ALU	08410070	*
6	8	KKAS 1500 6/8		ALU	08410071	*
8	8	KKAS 1500 8/8		ALU	08410072	*
8	10	KKAS 1500 8/10		ALU	08410073	*
10	10	KKAS 1500 10/10		ALU	08410024	
10	12	KKAS 1500 10/12		ALU	08410074	*
10	12,7	KKAS 1500 10/12,7		ALU	08410032	
6	6	KKXS 1500 6/6		AISI303	08410075	*
6	8	KKXS 1500 6/8		AISI303	08410076	*
8	8	KKXS 1500 8/8		AISI303	08410077	*
8	10	KKXS 1500 8/10		AISI303	08410035	
10	10	KKXS 1500 10/10		AISI303	08410025	
10	12	KKXS 1500 10/12		AISI303	08410036	
6	8	KKXS 1500 6/8	H7	AISI303	08410033	
6	10	KKXS 1500 6/10	H7	AISI303	08410027	
6	12	KKXS 1500 6/12	H7	AISI303	08410034	
8	12,7	KKXSS 1500 8/12,7	H7	AISI316	08410029	
10	10	KKXSS 1500 10/10	H7	AISI316	08410030	

*Not on stock